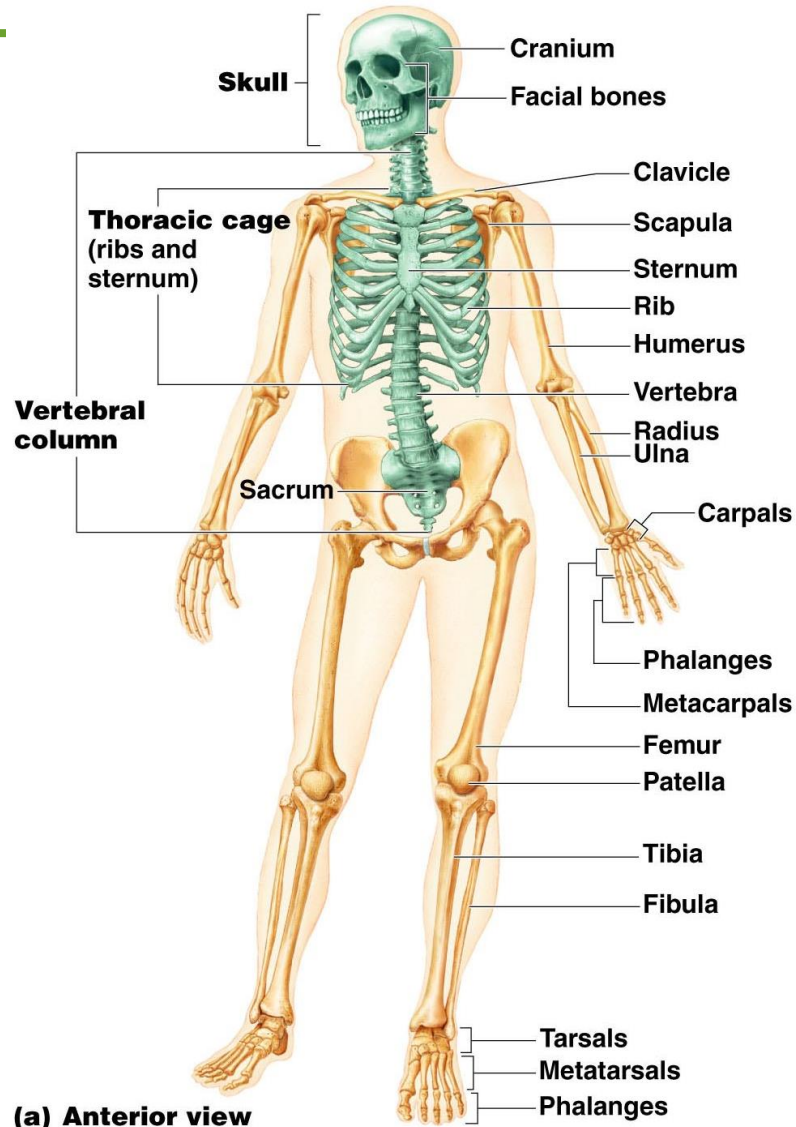


# LESSON 6

---

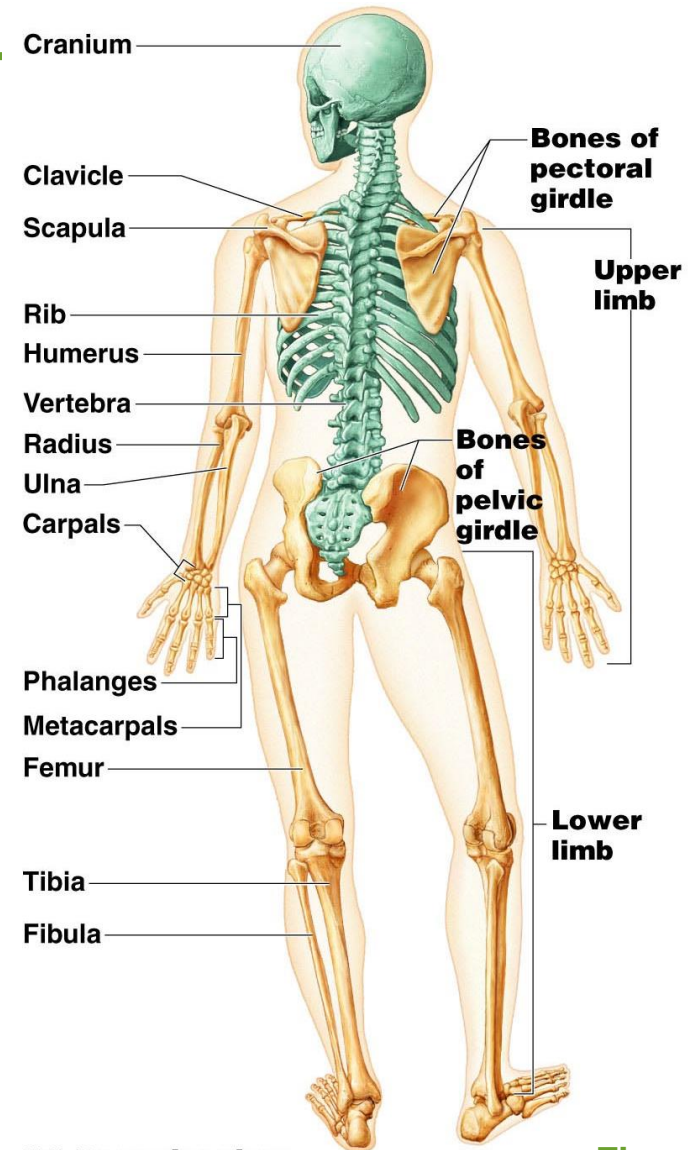
- **Quiz on 1<sup>st</sup> half of Chapter 5**
  
- **Begin Axial Skeleton**
  - **Skull**

# The Axial Skeleton (shown in blue)



(a) Anterior view

Figure 5.6a



(b) Posterior view

Figure 5.6b

# The Axial Skeleton

---

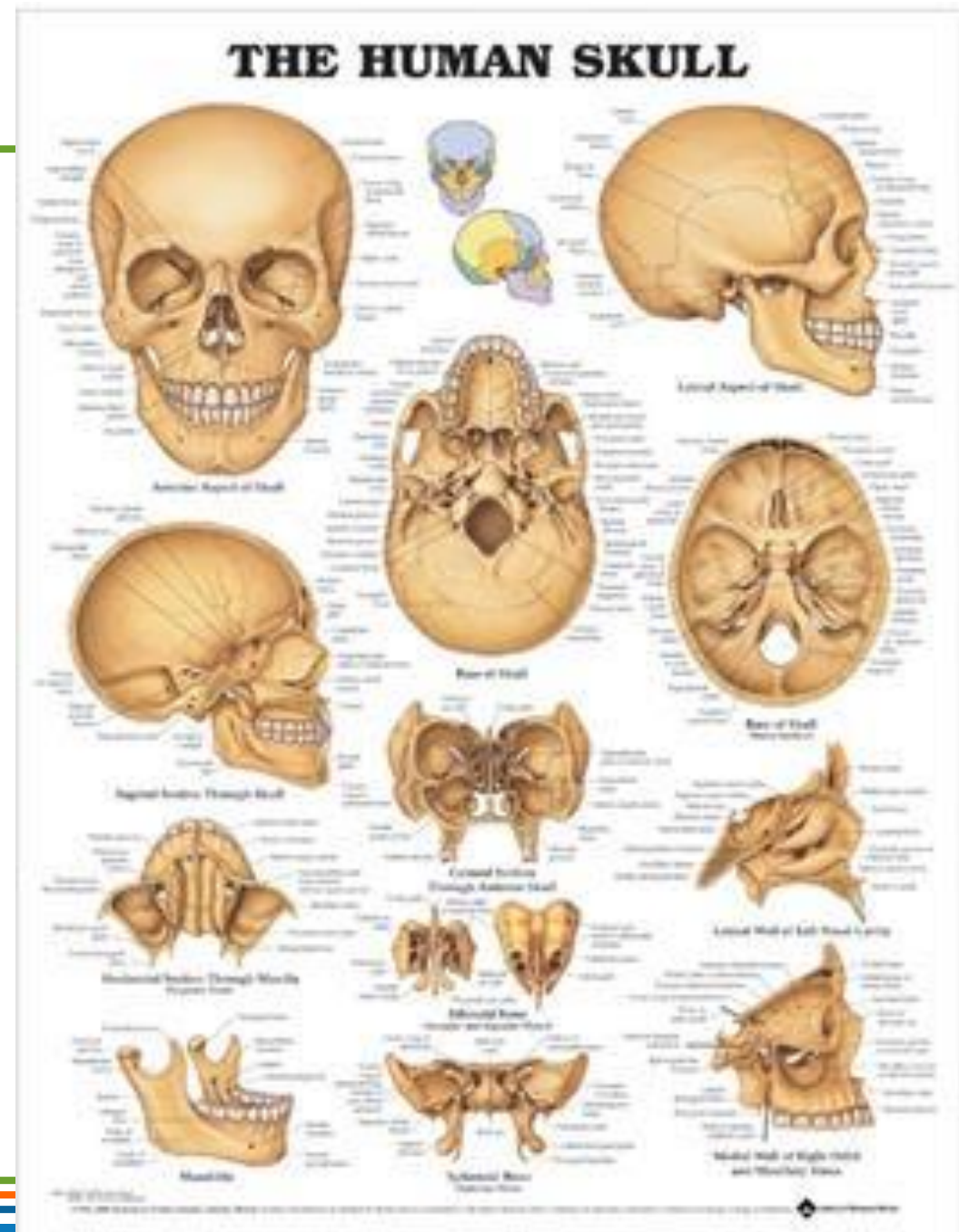
- Forms the **longitudinal** axis of the body
- Divided into three parts
  - **Skull**
  - **Vertebral column**
  - **Bony thorax**



# The Skull

Song – Bones of the Head

- Two sets of bones
  - **Cranium (8 bones)**
  - **Facial bones (14 bones)**
- Bones are joined by **sutures**
- Only the **mandible** is attached by a freely movable joint



# Human Skull, Anterior View

Figure 5.11

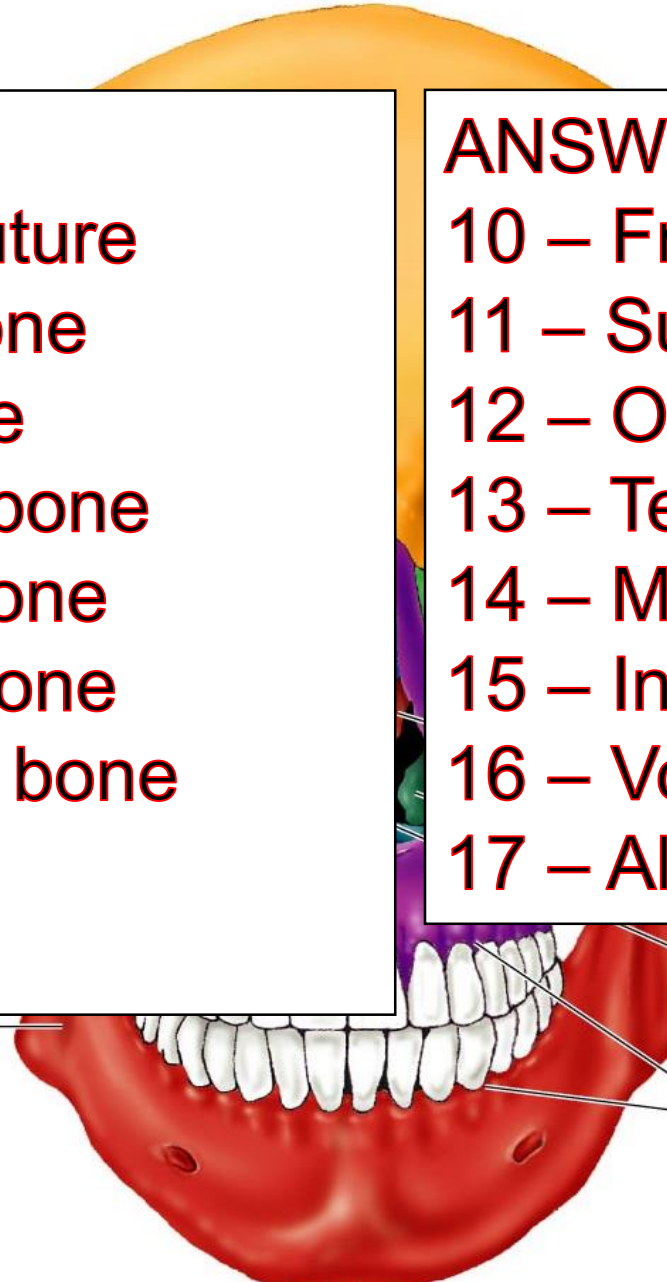
[Video: 3D  
Color Coded  
Labeled Skull](#)

## ANSWERS:

- 1 – Coronal suture
- 2 – Parietal bone
- 3 – Nasal bone
- 4 – Sphenoid bone
- 5 – Ethmoid bone
- 6 – Lacrimal bone
- 7 – Zygomatic bone
- 8 – Maxilla
- 9 – Mandible

## ANSWERS:

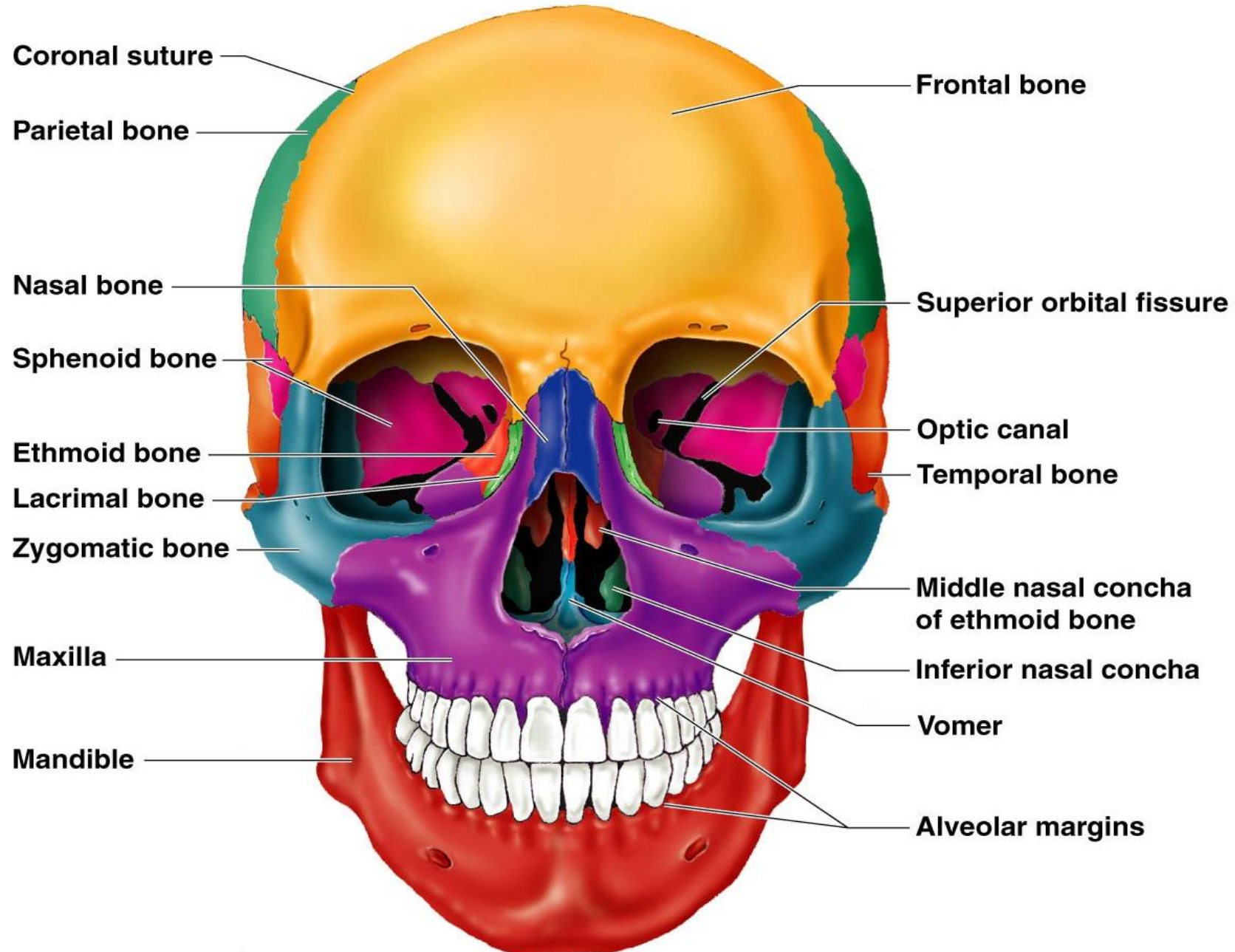
- 10 – Frontal bone
- 11 – Superior orbital fissure
- 12 – Optic canal
- 13 – Temporal bone
- 14 – Middle nasal concha
- 15 – Inferior nasal concha
- 16 – Vomer
- 17 – Alveolar margins



# Human Skull, Anterior View

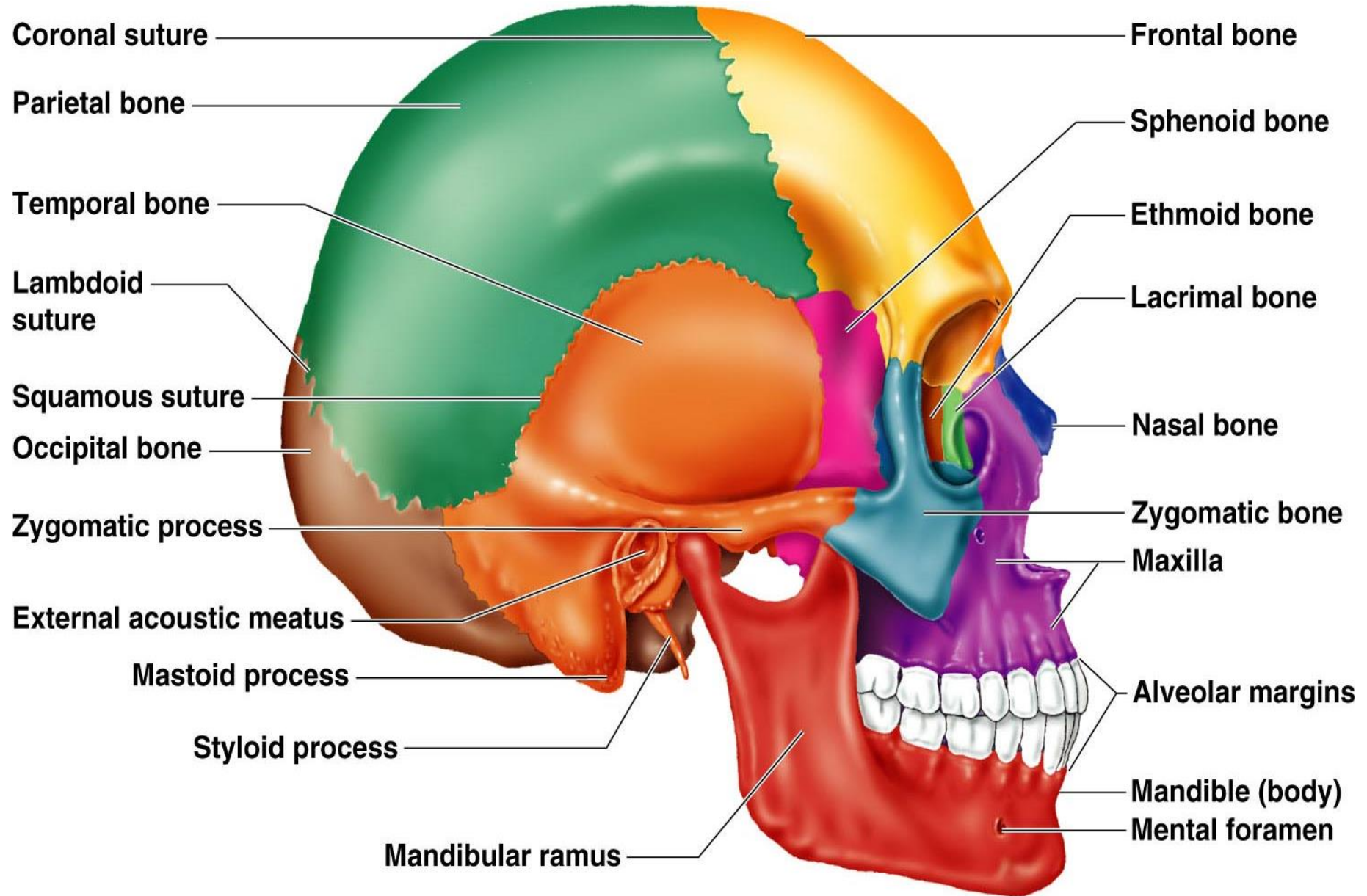
Figure 5.11

[Video: 3D Color Coded Labeled Skull](#)



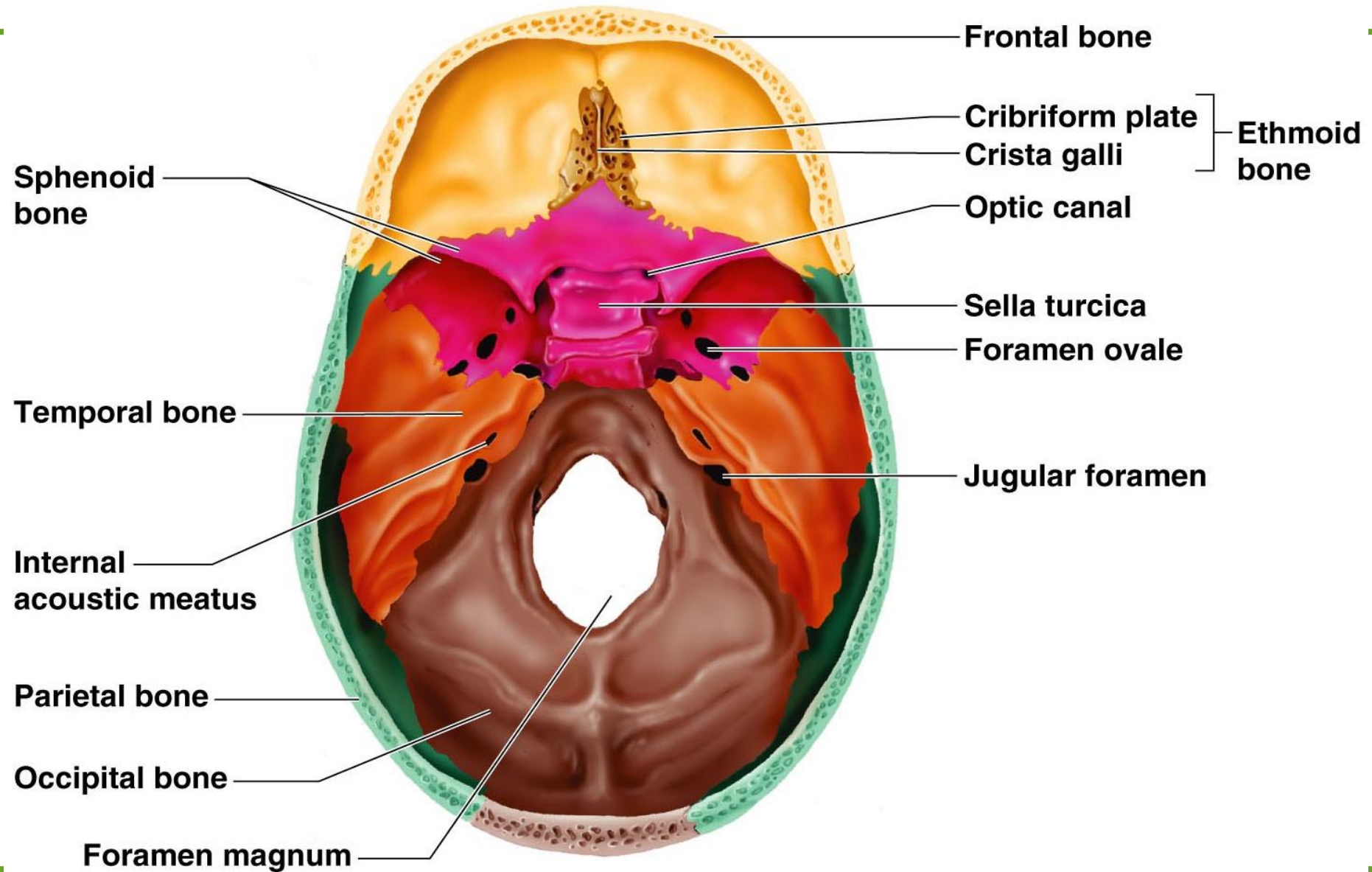
# Human Skull, Lateral View

Figure 5.7



# Human Skull, Superior View

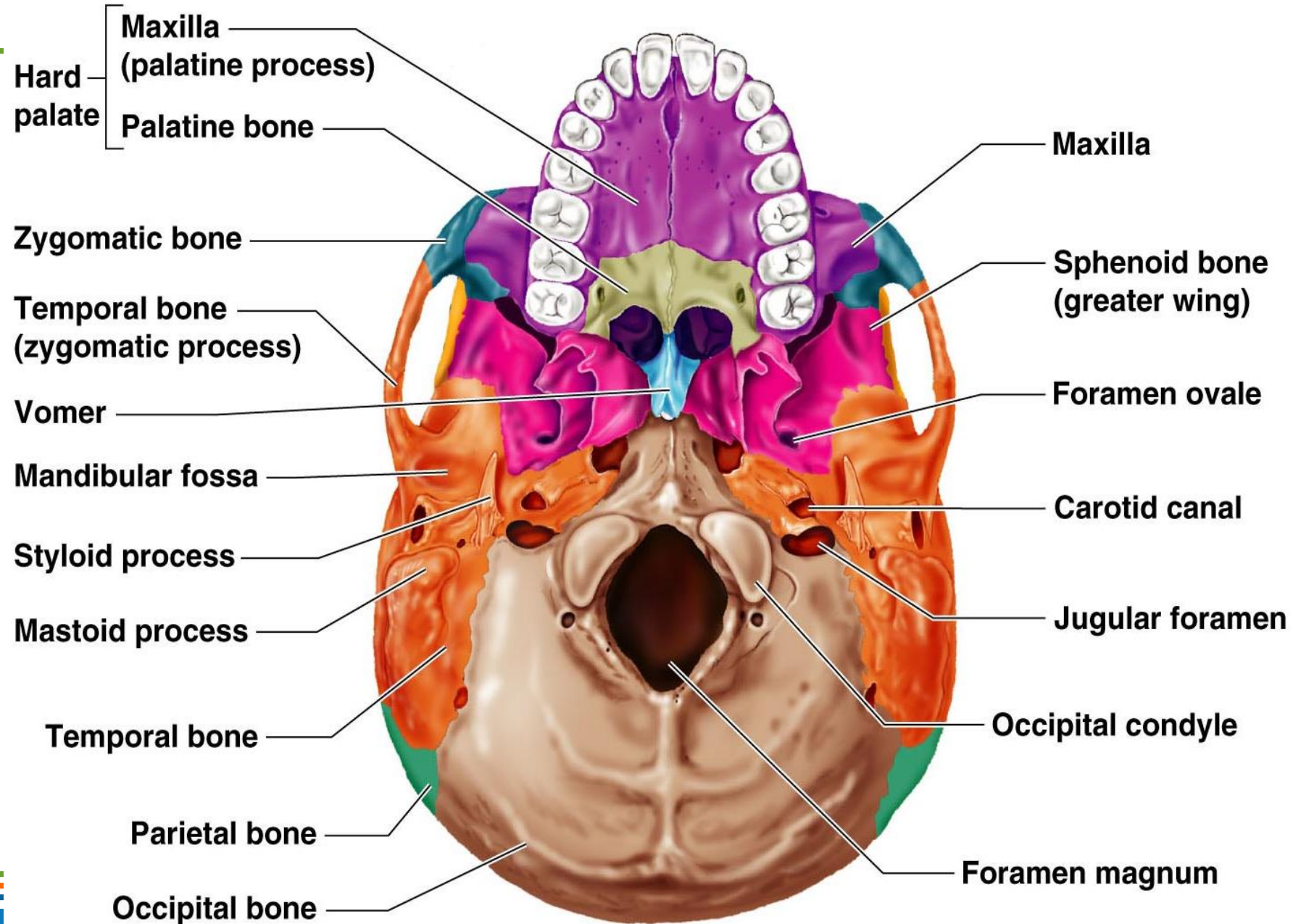
Figure 5.8





# Human Skull, Inferior View

Figure 5.9



# LESSON 7 & 8

---

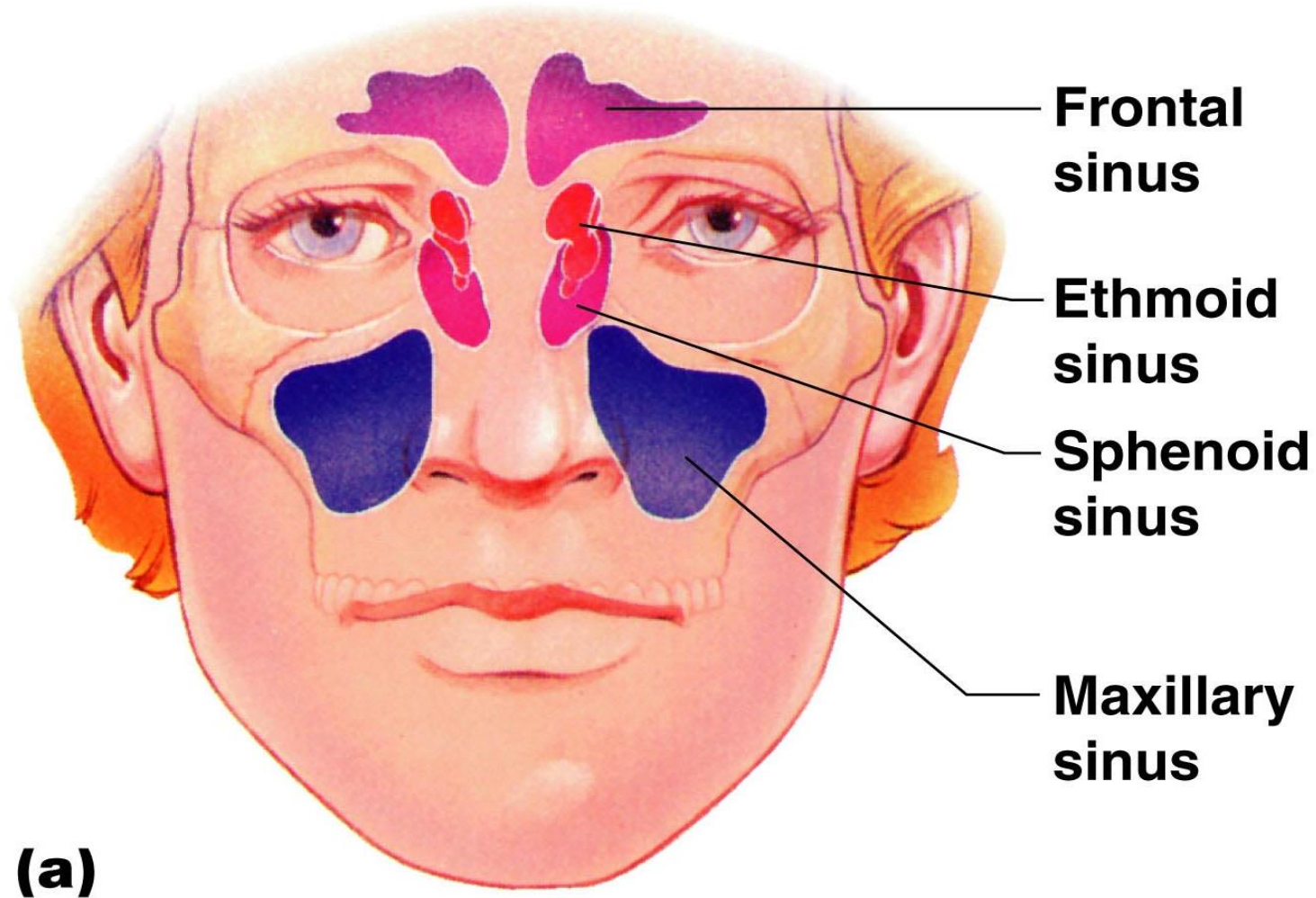
- **Axial Skeleton**
  - **Skull con't**
  - **Sinuses**
  - **Hyoid**
  - **Fetal Skull**

# Paranasal Sinuses

---

- **Hollow portions of bones surrounding the nasal cavity**
  - **Susceptible to infection because they connect with and drain into the nasal passages**
- **Functions of paranasal sinuses**
  - **Lighten the skull**
  - **Give resonance and amplification to voice**

# Paranasal Sinuses



**Answers:**

**1**

**2**

**3**

**4**

Figure 5.10a

# Paranasal Sinuses

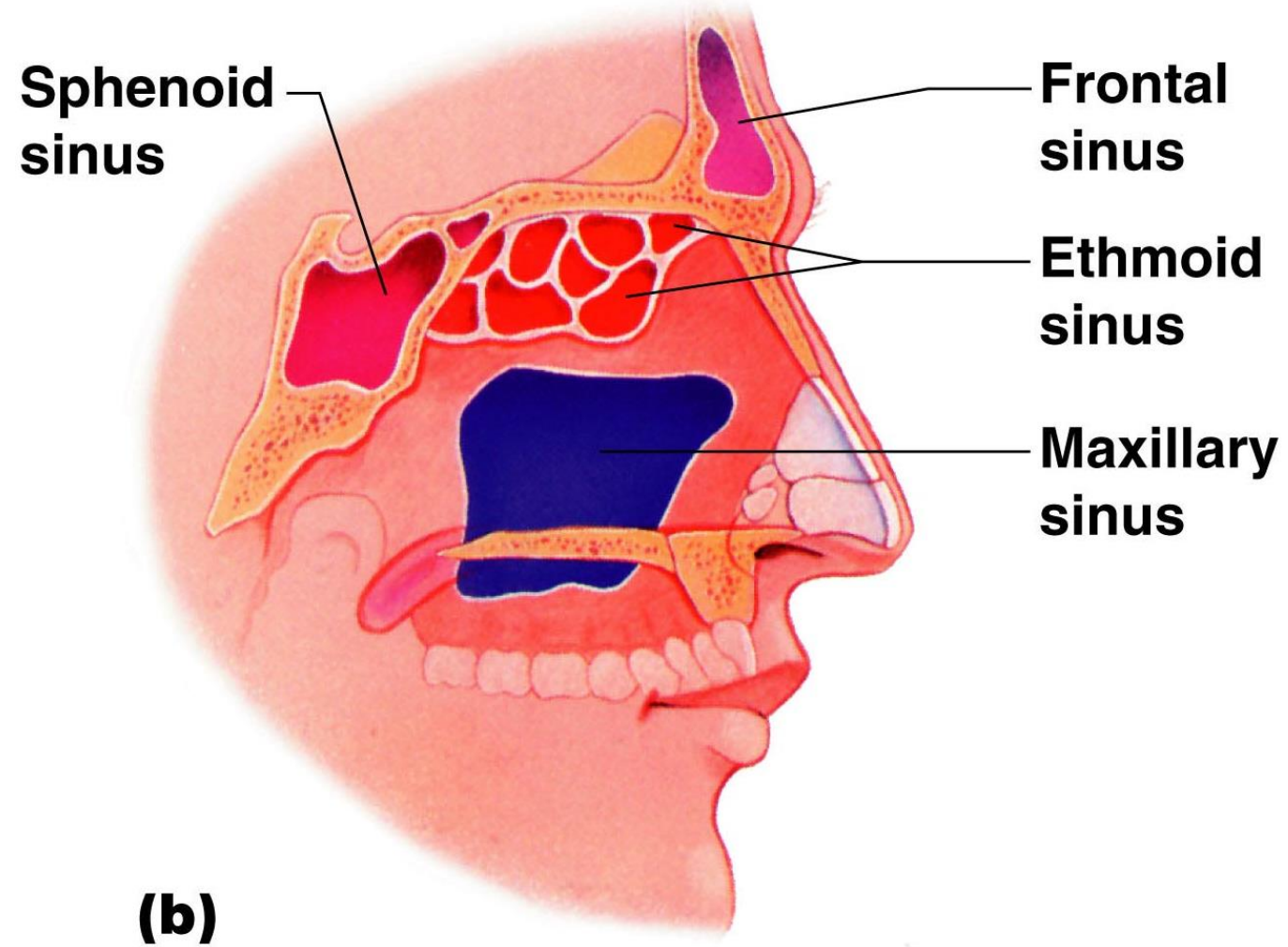


Figure 5.10b

# The Hyoid Bone

- The only bone that **does not articulate** with another bone
- Serves as a moveable base for the **tongue**
- Aids in **swallowing** and **speech**

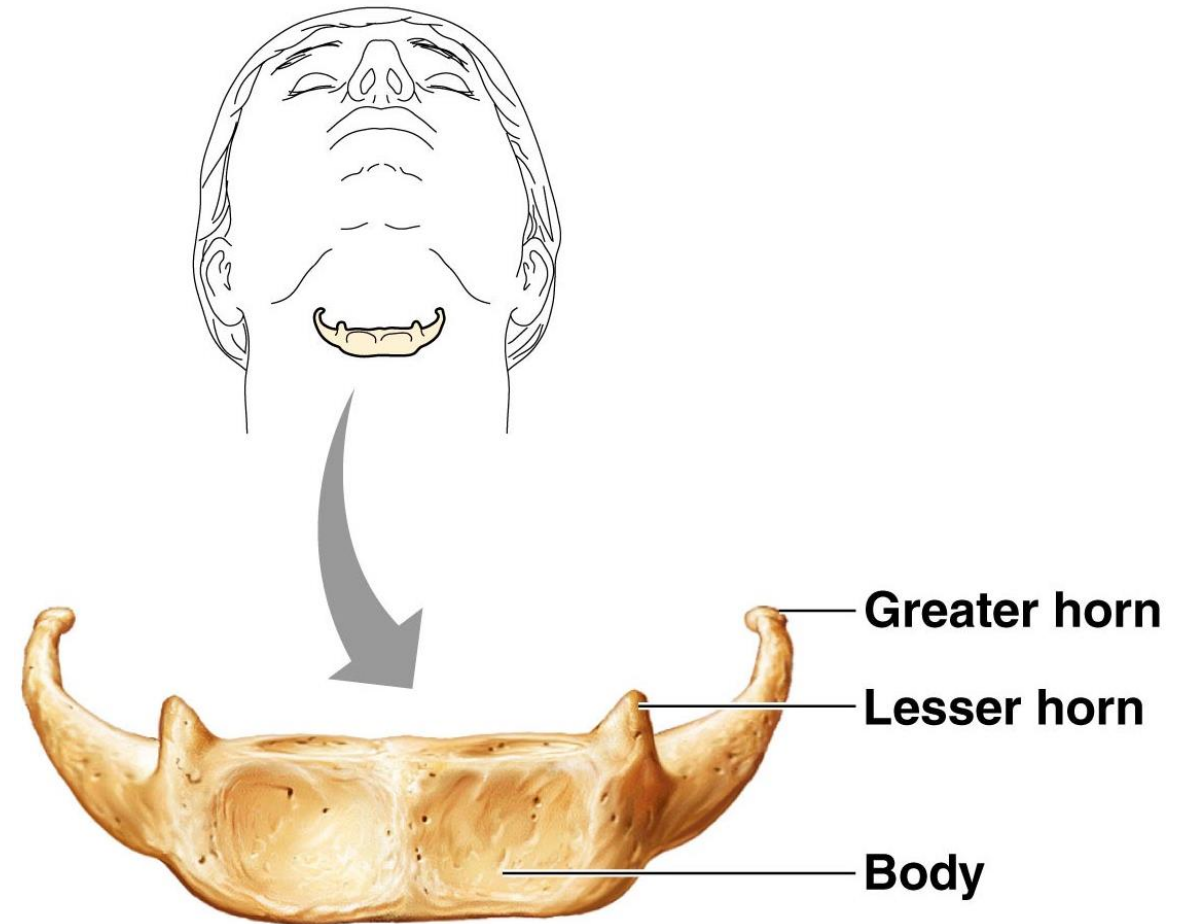
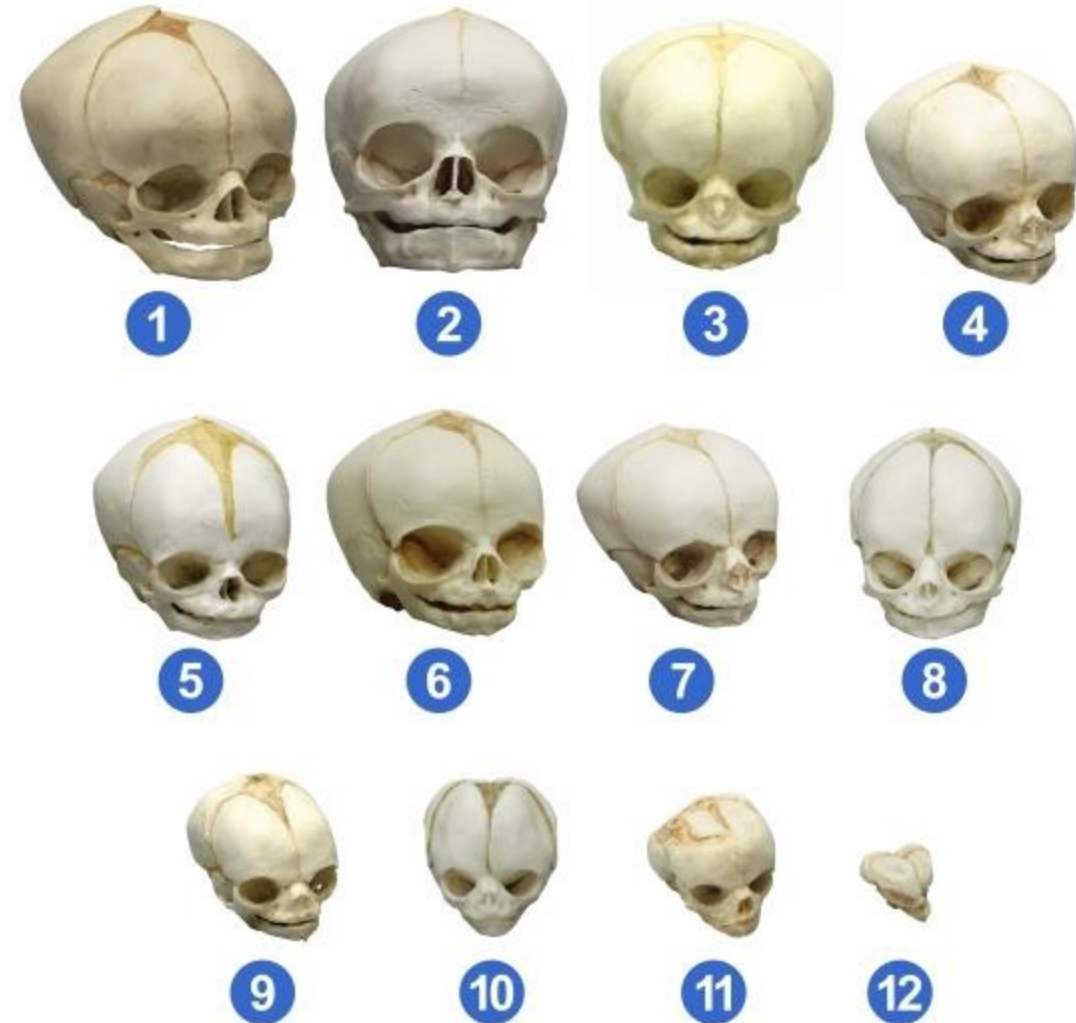


Figure 5.12

# The Fetal Skull

- The fetal skull is **large** compared to the infant's total body length
- **Fontanelles**—fibrous membranes connecting the **cranial** bones; (aka “soft spots”)
  - Allow the **brain** to grow
  - Convert to bone within **24 months** after birth



# The Fetal Skull

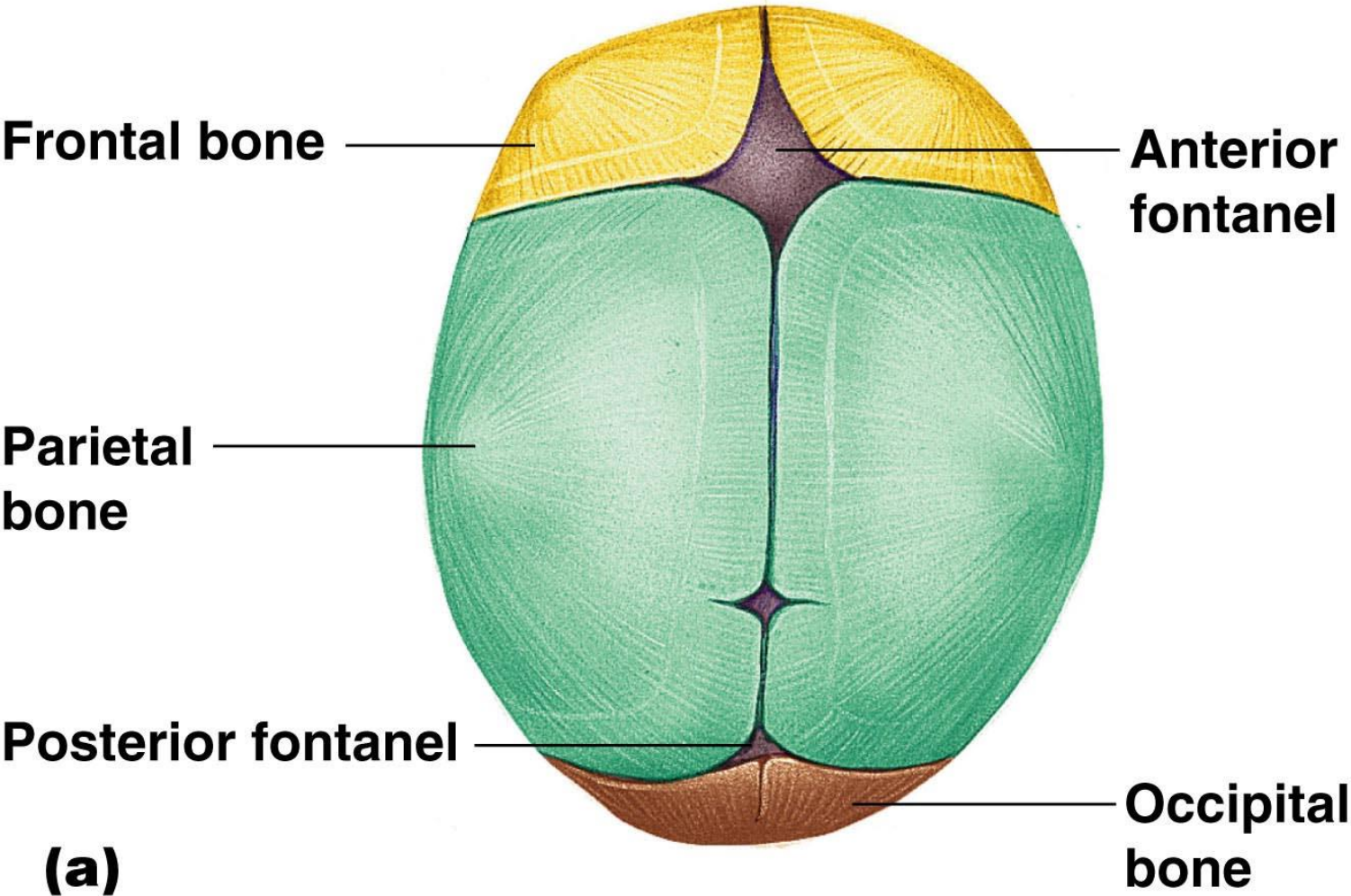
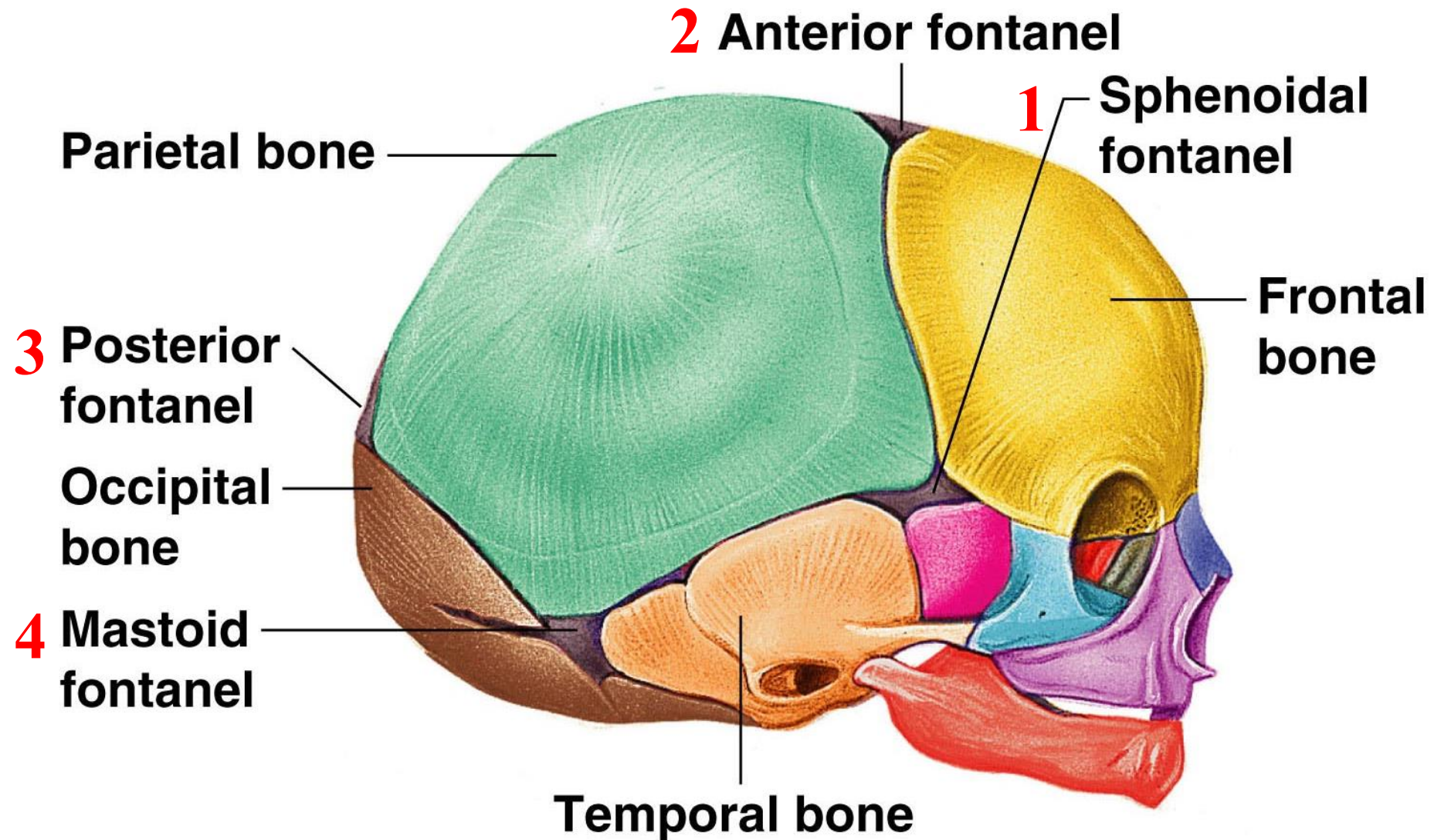


Figure 5.13a



# The Fetal Skull

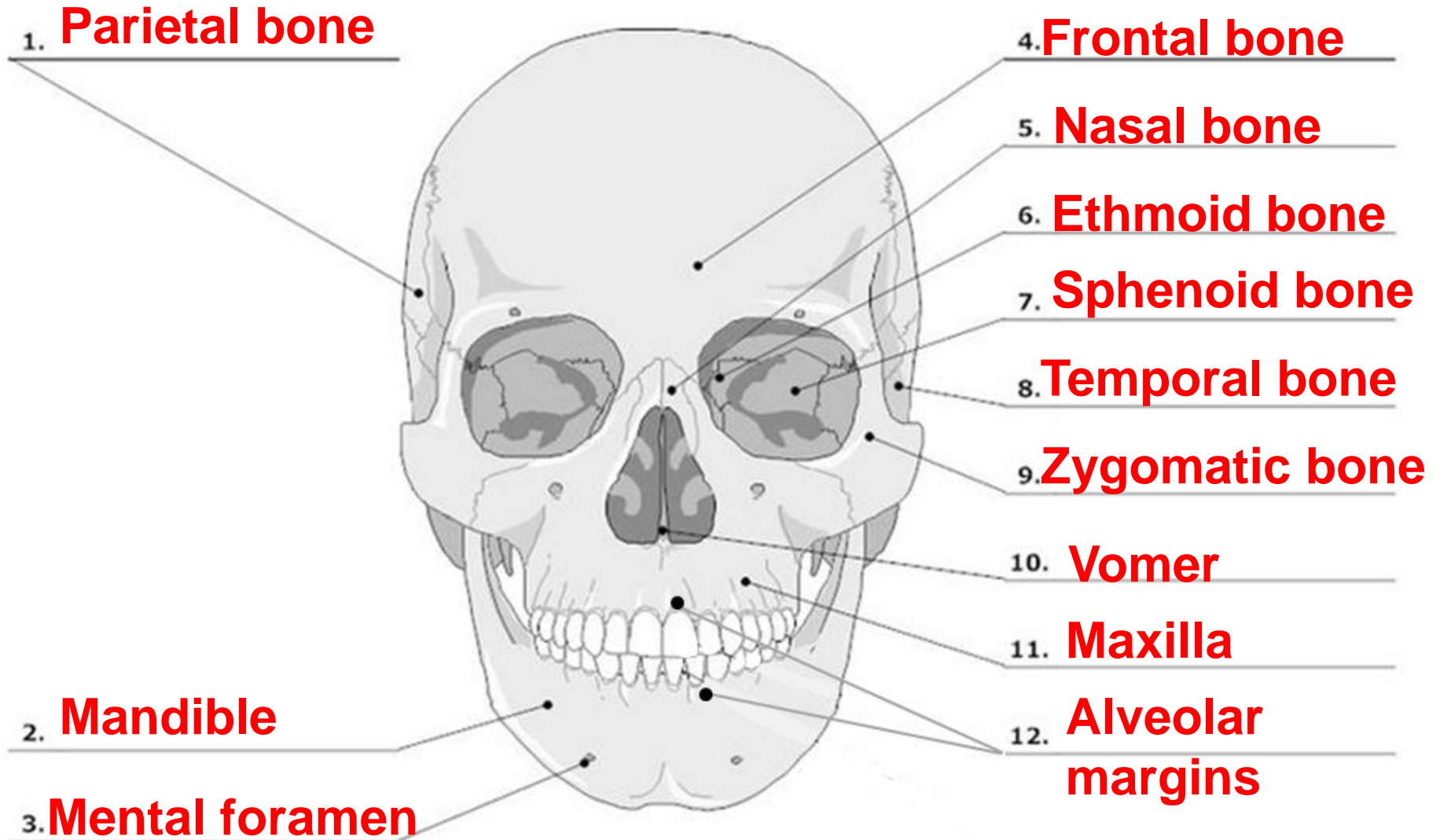
Figure 5.13b



**(b)**

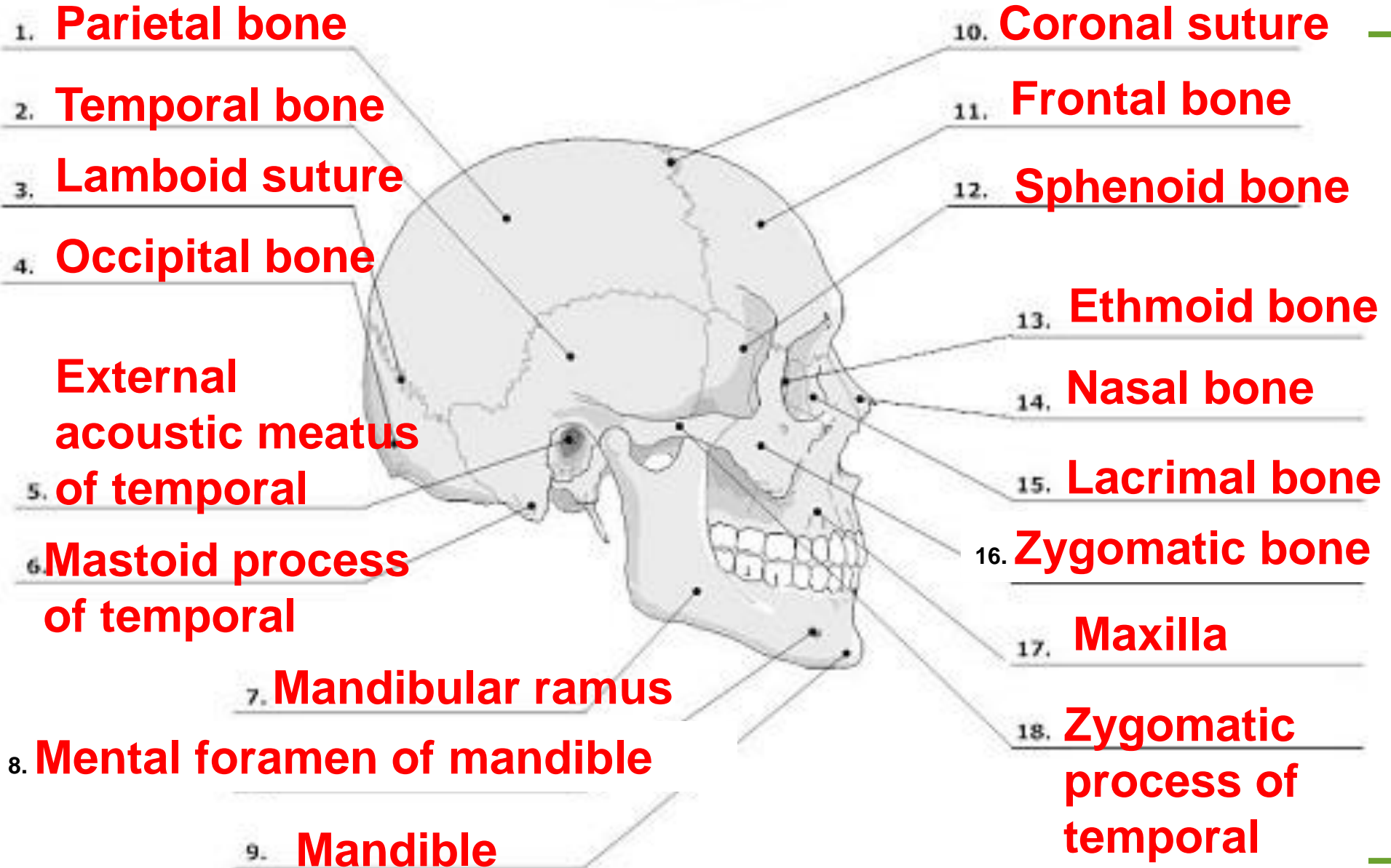
# Bones of the Skull

## Anterior View



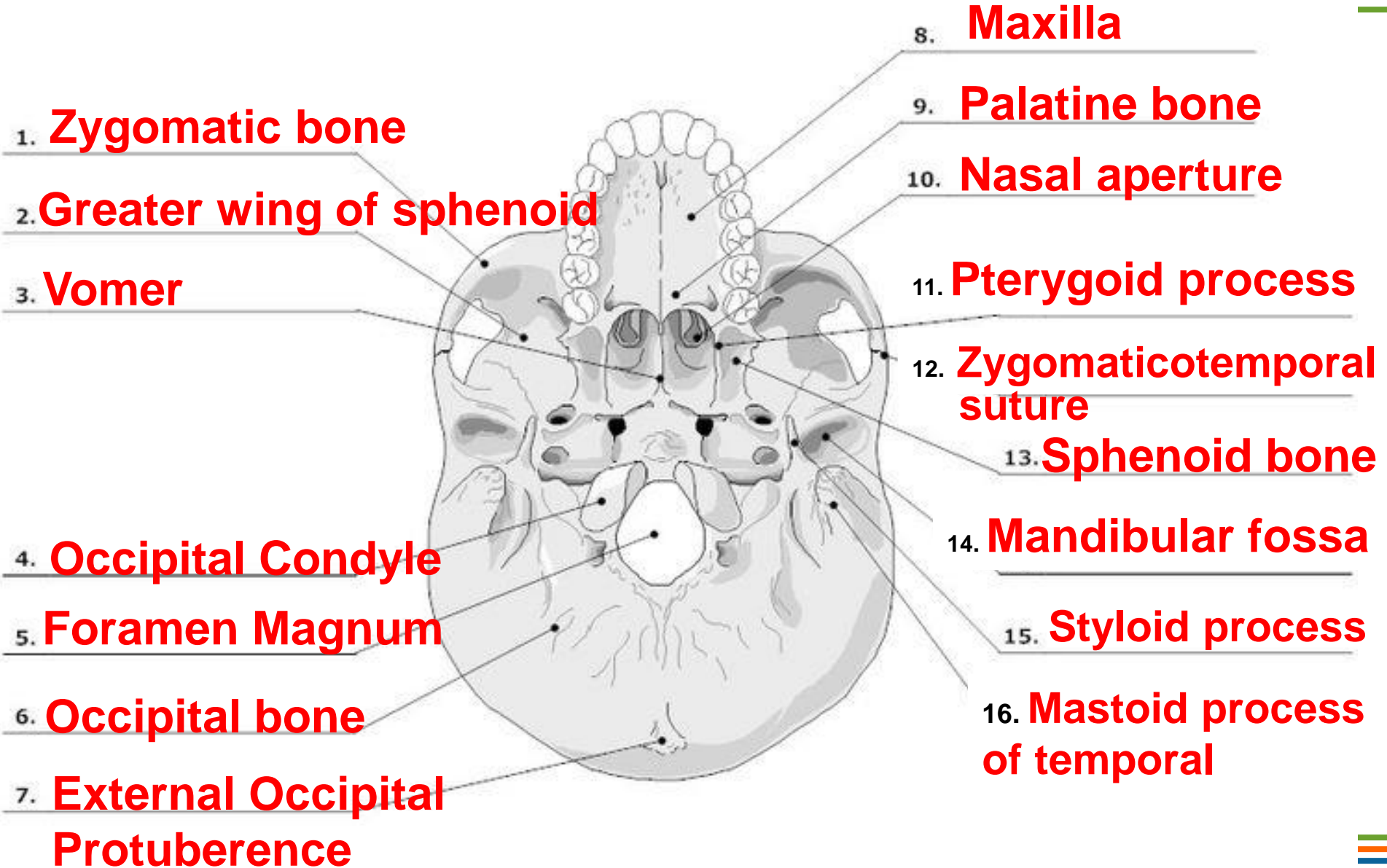
# Bones of the Skull

## Lateral View



# Bones of the Skull

## Inferior View



# Human Fetal Skull

